



Nettle Gap Close

Wootton Fields, Northampton

oriordanbond
SALES & LETTINGS



Nettle Gap Close

Wootton Fields
NN4 6AH

Price
£389,950

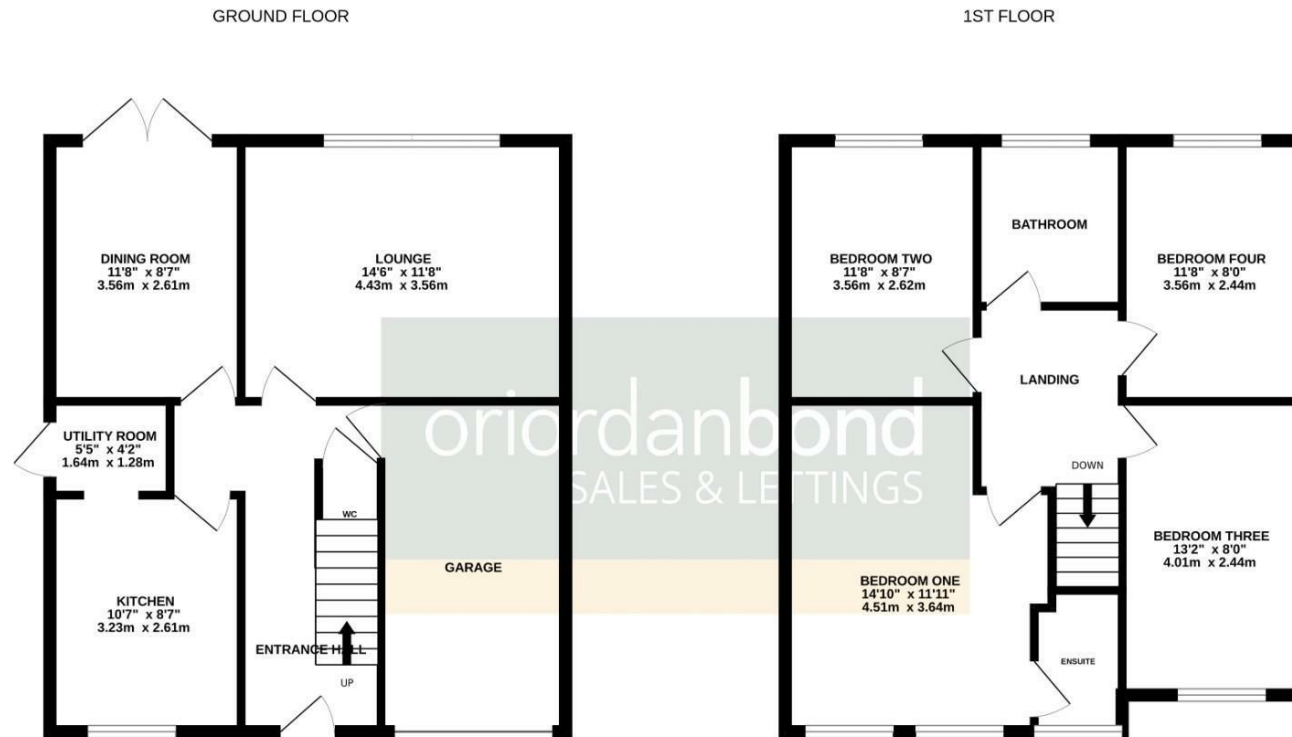
This well maintained four bedroom detached family home is offered for sale in the popular area of Wootton Fields. Situated within walking distance to Preston Hedges Primary School, the property also provides good access to many further outstanding schools, nearby amenities and road links.

The accommodation comprises entrance hall, cloakroom/WC, sitting room, dining room, kitchen, utility room, four well proportioned first floor bedrooms and a family bathroom with en-suite shower room to the master bedroom. Outside are front and rear gardens and a driveway providing off road parking leading to a single garage. Further benefits include gas radiator and uPVC double glazing. (B/1150/M)

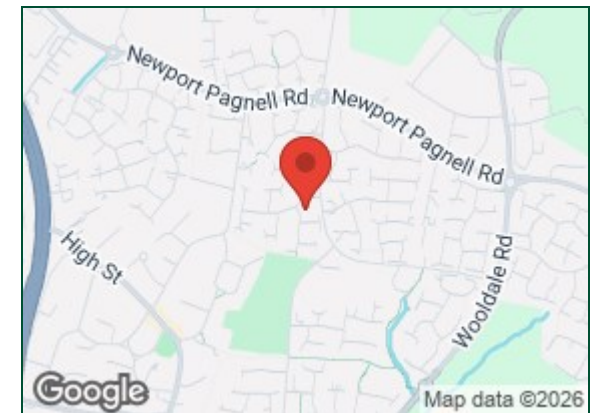
- Four bedroom detached family home
- En-suite to master bedroom
- Two reception rooms
- Gas radiator heating
- Enclosed rear garden
- Driveway and integral garage







TOTAL FLOOR AREA : 1150sq.ft. (106.8 sq.m.) approx.
 Whilst every attempt has been made to ensure the accuracy of the floorplan contained here, measurements of doors, windows, rooms and any other items are approximate and no responsibility is taken for any error, omission or mis-statement. This plan is for illustrative purposes only and should be used as such by any prospective purchaser. The services, systems and appliances shown have not been tested and no guarantee as to their operability or efficiency can be given.
 Made with Metropix ©2026



Additional information

- Council Tax Band: D
- Energy Efficiency Rating: D

Viewing

Viewing strictly by appointment – details below

Disclaimer

O’Riordan Bond Estate Agents Limited has not tested apparatus, equipment, fittings or services and so cannot verify they are in working order. The buyer is advised to obtain verification from their solicitor or surveyor.

O’Riordan Bond Grange Park Sales

01604 432007

grangepark@oriordanbond.co.uk

